



**ALASKA DIVISION OF HOMELAND SECURITY &
EMERGENCY MANAGEMENT**



SITUATION REPORT 22-054 • FEBRUARY 23, 2022

Toll-Free 1.800.478.2337

Anchorage Area 907.428.7000

SEOC 907.428.7100

<p><u>SEOC Preparedness Level</u> Level 1 – Routine Operations</p>	<p>http://ready.alaska.gov</p>	<p><u>National Terrorism Advisory System:</u> Read the NTAS Bulletin here</p>
<p><u>Maritime Security (MARSEC)</u> Level: 1-Minimum Appropriate Security Measures</p>	<p>WHO Novel Coronavirus Pandemic (COVID-19): 2019 Novel Coronavirus</p>	<p><u>Alaska Military Installation Force Protection Level:</u> FPCON Bravo</p>

(Significant changes from previous situation reports are in red.)

Significant Issues:

None.

Current Operations:

Interior Winter Storms - Disaster Assistance Centers

Under Governor Dunleavy’s January 3, 2022 declaration of state disaster for winter storms, in-person Disaster Assistance Centers for the state’s Individual Assistance program will open in the following communities over the next two weeks:

Delta Junction – Wednesday, February 23, through Thursday, February 24 from 9:00 am to 5:00 pm at the Delta Junction Community Center.

Fairbanks – Tuesday, March 1, through Thursday, March 3 from 9:00 am to 5:00 pm at the Fairbanks National Guard Armory.

Online and telephone registration is also available.

Threat Level Changes:

None.

State of Alaska Department of Health and Social Services (DHSS)

DHSS is now leading the State of Alaska COVID-19 Recovery through Department Operations, supported by SEOC and other state departments as required.

For current COVID-19 information, see:

<https://covid19.alaska.gov/>

<https://www.cdc.gov/coronavirus/2019-ncov/index.html>

NTAS BULLETIN

To read current or expired advisories, click the link below:

<https://www.dhs.gov/national-terrorism-advisory-system>

Travel Alerts and Conditions

For current driving conditions dial 511 or link to <http://511.alaska.gov/>

Barry Arm Landslide / Tsunami Risk

For the latest information on the Barry Arm Landslide and Tsunami risk, click here:
[DGGS Barry Arm Landslide and Tsunami Hazard](#)

Recent Earthquakes

USGS Earthquake Information: <http://earthquake.usgs.gov/>

National Tsunami Warning Center: <http://tsunami.gov/>

Alaska Volcanoes

Davidof Alert Level: **Advisory** and Aviation Color Code: **Yellow**

Great Sitkin Alert Level: **Watch** and Aviation Color Code: **Orange**

Pavlof Alert Level: **Watch** and Aviation Color Code: **Orange**

Semisopchnoi Alert Level: **Watch** and Aviation Color Code: **Orange**

For Alaska Volcano updates, go to: <https://www.avo.alaska.edu/>

Air Quality Index (AQI) Advisories

For the most up to date Air Quality Index Advisories:

<http://dec.alaska.gov/Applications/Air/airtoolsweb/Home/Index>

Spills of Oil and Hazardous Substances

The ADEC Spill Prevention and Response page is located at:

<http://dec.alaska.gov/spar/ppr/spill-information/response/>

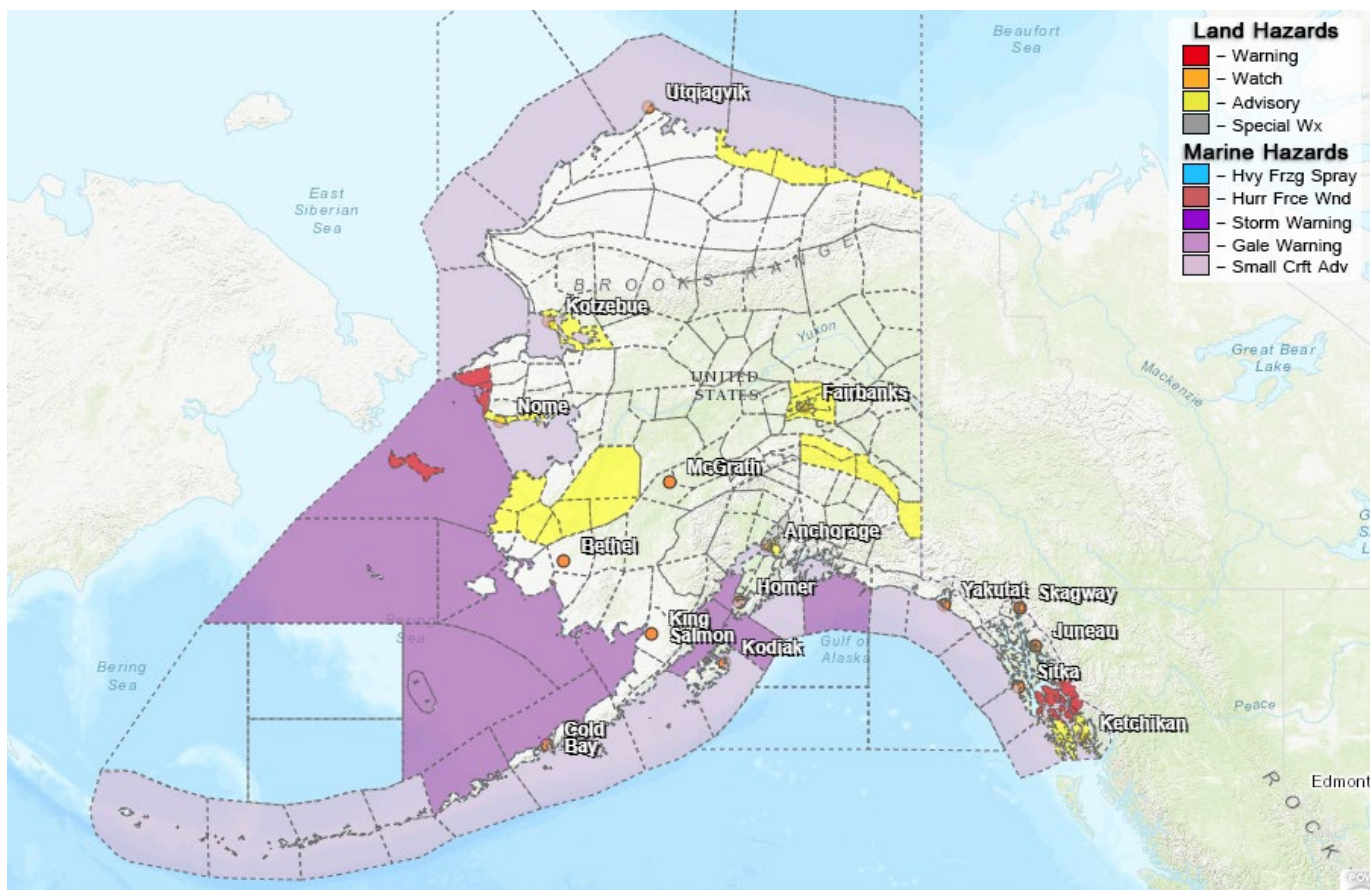
Alaska Cyber Security Information

State Employees may sign up for cyber security notifications and alerts at

<https://oit.alaska.gov/security>

CISA-Cybersecurity Services and Tools: www.cisa.gov/free-cybersecurity-services-and-tools

Significant Weather:



A Winter Storm Warning is in effect until 3 PM today for the Inner Channels, including Petersburg and Wrangell, for heavy snow.

A Winter Storm Warning is in effect until noon Thursday for Saint Lawrence Island and the Bering Strait Coast, for heavy mixed precipitation.

Winter Weather Advisories are in effect until 1 PM today for the Southern Inner Channels and Western Prince of Wales Island, for snow and freezing rain.

Winter Weather Advisories are in effect today and tomorrow for the Southern Seward Peninsula Coast, Baldwin Peninsula and Selawik Valley, Yukon Delta, and Lower Yukon Valley, for snow and light freezing rain.

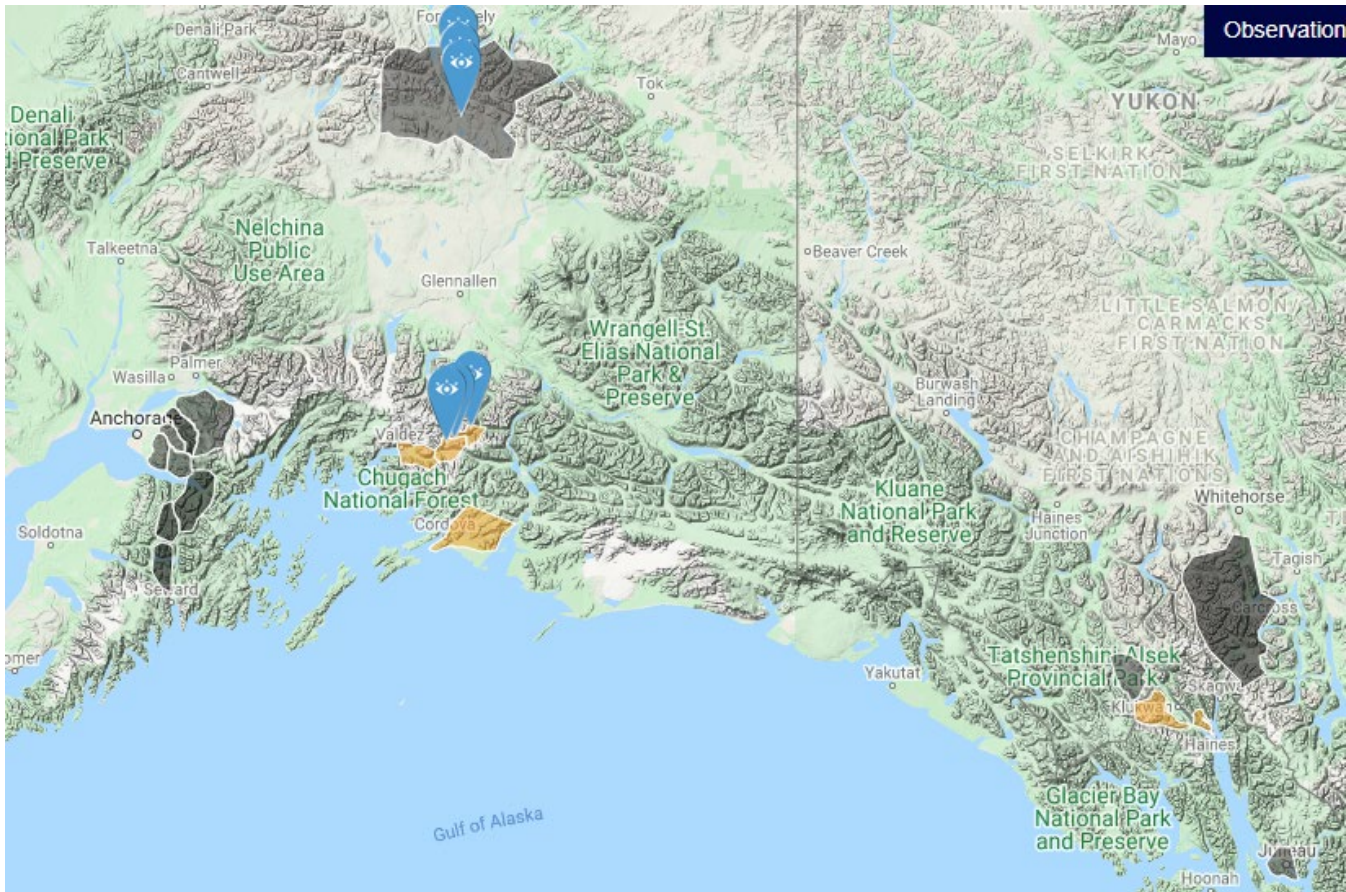
A Wind Advisory is in effect from 6 AM Thursday to 6 AM Friday for the Eastern Alaska Range, for south winds 30 to 40 mph with gusts up to 55 mph.

Winter Weather Advisories for the Central and Eastern Beaufort Sea Coast expire at 9 AM today.

Dense Fog Advisories are in effect until noon today for Fairbanks, and until 10 AM today for Anchorage.

For more information and the most current weather, Watches / Warnings / Advisories go to:
<http://www.weather.gov/arh>.

Avalanche Forecast:



There are areas near Haines, Valdez and Cordova with considerable risk, and near Hatcher Pass with high risk.

Check the Avalanche Forecast Center closest to your area for the most up to date information on avalanche potential. <https://alaskasnow.org> or <https://www.weather.gov/afc/avalancheweather>

The Next Situation Report: will be **24** February 2022. A significant change in the situation or the threat level will prompt an interim report.

This report is posted on the internet at <https://ready.alaska.gov/sitrep>. To register for email distribution, go to <http://list.state.ak.us/mailman/listinfo/dhsem.situation.report>. Direct questions regarding this report to the SEOC at 907-428-7100 or seoc@alaska.gov